



BPM
ESTATES

Hervey Court, Surrey Lane
London, SW11 3PT

- Permit parking
- Front and rear gardens
- Spacious living area
- Excellent transport links

Offers In Region Of £499,950



BPM Estates are pleased to offer this spacious 3 bed ground and first floor maisonette for sale in Hervey Court, Battersea with front and rear garden. The property is comprised of a spacious reception room with door leading in to rear garden, a fully fitted kitchen and downstairs WC with laminate wood flooring throughout and ample storage. Upstairs are 2 large double bedrooms, one single bedroom and a bathroom with bath and shower head. The property is situated a short walk from Battersea Park with easy access to Chelsea and is served by bus routes on Battersea Bridge Road. There is also easy access to Clapham junction and Victoria train station and local schools.

CHAIN FREE

RECEPTION ROOM

15' 10" x 12' 0" (4.83m x 3.66m)

KITCHEN

10' 0" x 9' 0" (3.05m x 2.74m)

MASTER BEDROOM

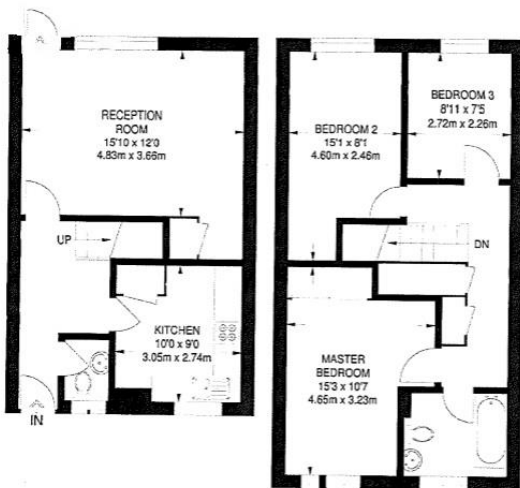
15' 3" x 10' 7" (4.65m x 3.23m)

BEDROOM 2

15' 1" x 8' 1" (4.6m x 2.46m)

BEDROOM 3

8' 11" x 7' 5" (2.72m x 2.26m)



SECOND FLOOR
409 SQ FT / 38.0 SQ M

THIRD FLOOR
491 SQ FT / 45.6 SQ M

APPROXIMATE GROSS INTERNAL AREA
900 SQ FT / 83.6 SQ M

36 The Broadway
Darkes Lane
Potters Bar
Hertfordshire
EN6 2HW

www.bpmestates.com
sales@bpmestates.com
01707664400

Agents Note: Whilst every care has been taken to prepare these sales particulars, they are for guidance purposes only. All measurements are approximate and for general guidance purposes only and whilst every care has been taken to ensure their accuracy, they should not be relied upon and potential buyers are advised to recheck the measurements